

NEWS FROM KING'S ✠ CHAPEL

The Society of King's Chapel • 64 Beacon Street, Boston, MA 02108 • 617/227-2155 • www.kings-chapel.org

Dear Friends,

Inside this issue:

<i>Sundays</i>	2
<i>Tuesday Recitals</i>	2
<i>Wednesday Services</i>	2
<i>Flowers</i>	2
<i>From the Assistant Minister</i>	3
<i>Announcements, Updates, & Events</i>	4
<i>Vestry Views</i>	4
<i>Church School</i>	6
<i>People Needing People</i>	6
<i>King's Chapel Calendar</i>	7

Special This Month:

Endangered Species as Stations of the Cross, pages 4-5

Excerpts from a sermon on John 15:1-11 by Dean Denniston, page 5

Easter Sunday Photos, page 6

Assistant Ministers through the years, page 6

This is the season of celebrations: Pentecost, anniversaries, birthdays, graduations and weddings. On April 23rd our sanctuary will be the site of the 375th anniversary of the Boston Latin School, replete with school, city, and university leaders as well as graduates. For, we used to be neighbors in the 17th century. (The first public school in the United States used to be where Old City Hall now is.) On Sunday, May 23rd, we will bless our pets in the Parish House Garden, celebrate Pentecost, and welcome a new member in our church. On June 13th we will mark the 324th birthday of King's Chapel with 324 candles.

Pentecost is the day in the life of the Church on which the Holy Spirit is said to have been delivered to all people through the diverse witness of Jesus' disciples. Regardless of language, nationality, ethnicity, class, gender or age – all people are offered that gift from God, which allows everyone to miraculously understand each other, or as Acts 2:17 says, to “see visions...and dream dreams.” A covenanted and diverse church, I believe, can understand this well. Namely, that our members come together not because of a singular theology, but because of a commitment to supporting the worship life of their church and to offering service to the larger community guided by our covenant.

King's Chapel's covenant reads: *“In the love of the truth and in the spirit of Jesus Christ, we unite for the worship of God and the service of man.”* It is not a creed for intellectual ascent, but a covenant – a promise – amongst its members with God for visible and accountable behavior and action. It is not so much about “I believe this or that,” but a way of life. It is about whether we come to Morning Prayer to build up and encourage the congregation. It is about whether we serve those beyond our church gates, both in the city and wherever God guides our congregation to perceive and meet very real needs.

Membership in our covenantal tradition means attendance, service and support—morally, spiritually as well as financially. During this coming season may we—together—begin to see visions and dream dreams. May these draw us together to hold a *common* vision and dream, and be nothing less than a great church in the ecumenical body of Christ.

In the Spirit,

Dianne

KING'S CHAPEL SUNDAY SERVICES

King's Chapel is at the corner of School & Tremont Streets in downtown Boston. Sunday services begin at 11 a.m. and last for approximately one hour.

MAY 2 Morning Prayer
The Rev. Dianne Arakawa, preacher
The Rev. Joanne Giannino, co-officiant
William Kuttner, lector
*The lessons are Acts 11:1-18
and John 14:23-29.*

MAY 9 Morning Prayer
The Rev. Dianne Arakawa, preacher
The Rev. Joanne Giannino, co-officiant
Patricia Bass, lector
*The lessons are Acts 16:9-15
and Luke 24:46-53.*

MAY 16 Morning Prayer
The Rev. Dianne Arakawa preacher
The Rev. Joanne Giannino, co-officiant
Carol Kemp, lector
*The lessons are Acts 16:16-34
and John 17:20-26.*

MAY 23 Pentecost
The Rev. Dianne Arakawa, preacher
The Rev. Joanne Giannino, co-officiant
Samuel Perry, lector
*The lessons are Acts 2:1-21
and John 14:8-17, 25-27.*

MAY 30 Morning Prayer
The Rev. Joanne Giannino, preacher
The Rev. Dianne Arakawa, co-officiant
Amy Meyer, lector
*The lessons are Proverbs 8:22-31
and John 16:12-15.*

TUESDAY RECITALS

Tuesday Recitals at King's Chapel present a variety of programs, featuring local and visiting musicians. Admission is by suggested donation of \$3; the donations are given to the performers. Programs begin at 12:15 p.m. and last approximately 35 minutes. For more information, please call 617/227-2155, or visit www.kings-chapel.org.

MAY 4 Trio Cordefiato
(flute, clarinet, guitar)
Works by Molino, Reselli, Febonio

MAY 11 David Carrier
plays the C.B. Fisk Organ.
Works by Bach & Mushel

MAY 18 Peter H. Bloom, flute
Karl Henning, clarinet
Works by Karl Henning

MAY 25 Steven Young
plays the C.B. Fisk Organ.
Works by Merkel, Robinson,
Rheinberger

MAY FLOWERS

WEDNESDAY SERVICES

Midweek prayer services begin at 12:15 p.m. and last approximately 35 minutes.

MAY 5 Midweek Prayer
The Rev. Joanne Giannino, preacher
Ray Lynds, lector

MAY 12 Midweek Prayer
Dean Denniston, preacher
Medb Sichko, lector

MAY 19 Holy Communion
The Rev. Dianne Arakawa, preacher
Clifford Allen, lector

MAY 26 Midweek Prayer
Chaplain Dr. Arthur Judge, preacher
Amy Meyer, lector

WITHIN THE PARISH

BLESSINGS

CONGRATULATIONS

NEWS FROM KING'S CHAPEL
Tel. 617/227-2155 • Fax 617/227-4101
Email: admin@kings-chapel.org

Published monthly, with a combined July/
August issue, and distributed free of charge to
Members and Friends of the Society of King's
Chapel.

Brandon Goad, editor
©2010 The Society of King's Chapel
USPS 011-271

Periodical Postage rates paid at
General Mail Facility, Boston, MA
02205-9618

Postmaster: Send address changes to
News from King's Chapel
64 Beacon St., Boston, MA 02108

*If you wish to donate flowers, please contact Louise Perkins,
Chancel Committee Co-chair.*

SECOND-SUNDAY OFFERING

The offering will be given to Project Bread.
Project Bread is dedicated to alleviating, pre-
venting, and ultimately ending hunger in Mas-
sachusetts. Each year, King's Chapel donates
space in the Parish House to Project Bread
during the Walk for Hunger.

**CHURCH SCHOOL
SERVICES & EVENTS**

*Sundays at 9:45 a.m. in the Little Chapel at the Parish
House, 64 Beacon Street*

MAY 2 Family Service
The Rev. Joanne Giannino, preacher

MAY 9 Family Service & Church School
The Rev. Joanne Giannino, preacher

MAY 16 All Church Sunday

**MAY 23 Pet Blessing Service
& Church School**
The Rev. Joanne Giannino, preacher

MAY 30 All Church Sunday

THANK YOU

To everyone who helped to make Holy Week both meaningful and memorable—especially our Endangered Species artists and displayers—Katherine Wright; Co-lead ushers, Anne Sexton and Jeff Bursaw, and their ushers; lecturers—Clifford Allen, Aaron Stockwell, Chris Barnett, Lee Glenn, Charles Perry, John Hemenway, Crael Hills, Carol Kemp, Louise Perkins, Richard Weeks, Marie Wells, Todd Lee, Sylvia Soderberg, and cantor, Pamela Gore; Lucifer, Allen Speight; acolytes, Pat Bass and Reese Millican; Chancel co-chairs and decorators—Louise Perkins, Elsie Herrmann, Paula Tranter Bok, Widad Ayad and others; Easter egg dyers, Beth Chapin and Elizabeth Thomson, and our staff—Heinrich Christensen & the Choir, Joanne Giannino, Brandon Goad, Shannon Lee and our Vergers, Bob Goodwin and John Coulter.

To the Rev. Dr. Carl Scovel for offering our four Lenten Psalms classes.

To everyone who helped with our Hearing Luncheon and meeting—especially Sally Kahn, Barbara Fay and helpers, Sylvia Soderberg, Todd Lee, Beth Chapin, Bill Sears, all Committee chairs, and our Parish Administrator, Brandon Goad.

To our Parish House Gardeners—Patsy Sharaf, Joy Natoli, Betsy Peterson, Sylvia Soderberg, and Katherine Wright—for timely trimming and planting.

✦ MIDWEEK SERVICES

Midweek Service, held on Wednesday, from 12:15 to 12:45 or so, is a long-established King's Chapel tradition. Conversation with that day's preacher and assorted parishioners and visitors is a highlight. Holy Communion is offered on the third Wednesday of each month.

-Cliff Allen, Chair, Membership

✦ PENTECOST SUNDAY

This year the fiftieth day after Easter, Pentecost, will take place on Sunday, May 23rd. The church will celebrate with its 11 am worship service, which will include the receiving of Catherine Price as a new member. It will be the final service before Homecoming Sunday including the Choir. In the Parish House garden, we will hold the annual 9:45 am Pet Blessing. On Pentecost, we invite and encourage our parishioners to wear red, or a touch of it, as it is the liturgical color for the day, symbolizing the flames of the Holy Spirit.

from *THE ASSISTANT
MINISTER*

"One touch of nature makes the whole world kin." - Shakespeare

Did you see it? The Endangered Species art projects that hung at the church from Palm Sunday through April 18, just before Earth Day. Twelve artists raised our awareness about endangered, extinct, and one "resurrected" (de-listed) species.

I think many of us learned a lot about some beautiful creatures and the threats to their survival. Well, now that our consciences have been raised, it is time to act. Several participants have sent ideas so that we as individuals, families, and a congregation can work toward saving these species. What follows are some of their suggestions.

Amy Meyer recommends using new media to spread the word and encourage others. Amy posted a photo of her endangered Florida manatee poster on her Facebook page and wrote a comment asking FB readers to be careful when boating (because humans using boats are their #1 threat). She has also been praying for her manatees, her new friends. ;-)

Shannon Lee, whose poster highlighted the Easter Bilby, shares a unique approach to raising awareness that might inspire other unique approaches: In Australia, where the Bilby lives, there have been moves in recent years to popularize the endangered native [Bilby](#) as an alternative to the Easter Bunny through the promotion of chocolate Easter Bilbies. The campaign has had some success, with Easter Bilbies now a common sight in Australia around [Easter](#), although the traditional Easter Bunny remains more popular.

Sylvia Soderberg tells us how we can help to protect the Hawksbill Sea Turtle and other species. First, be aware of the reasons for their decline, so that if you ever have an opportunity, you can be informed and speak up or act. Hawksbills are hunted for their beautiful shells, which are used in jewelry and other artifacts. They nest on tropical beaches, so their nesting habitats are disturbed and destroyed by construction of homes and beachfront recreational facilities and resorts. Since they depend upon coral reefs for the sponges they eat, destruction of coral reefs eliminates this vital food source, and also another important nesting habitat. Like other types of sea turtles, Hawksbills become entangled in certain kinds of fishing nets, an accidental and unintended consequence of some fishing practices. Some sea turtles and other sea creatures are killed by balloons, which are released by humans. They may float out over the ocean and be mistaken by the turtles for jellyfish, which sea turtles eat, and then the balloons can choke the turtles.

You can help by participating in beach cleanups and attending public sea turtle walks. You can do a class presentation and talk with your family and friends to raise awareness of the plight of sea turtles. But right away, you can avoid releasing balloons. As much fun as it is, this practice can be deadly to marine life in general, and to already endangered sea turtles in particular. Tell your family and friends!

Elsie Herrmann, who painted the beautiful image of the saved Bald Eagle, suggests that people might adopt a species. The Alaska Raptor Center, for example, offers an Adopt-a-Raptor program, which supports its mission "to provide critical medical treatment for injured bald eagles, birds of prey and all birds that need our help; to educate the public about species and habitat preservation; and to conduct avian research."

For more information on any of the species in the project, or to find another that moves your heart, please visit the websites of the World Wildlife Fund, the World Wildlife Foundation, or Defenders of Wildlife to start your search.

Susan _____, one of our young artists, who created a poster about the red fox and helped all of us by drafting suggestions for the creation of the posters, gives us some good general suggestions for our actions, too: Don't litter/pollute, donate to the Endangered Species Foundation, and spread awareness.

We are all kin.

May we live as if it is so,

JOANNE

ANNOUNCEMENTS, UPDATES, & EVENTS

❖ PRIDE PARADE, JUNE 12

This year is the 40th anniversary of the Boston Pride Parade, a colorful celebration of diversity and acceptance. King's Chapel will have its own team under the King's Chapel banner for the first time, joining more than 140 other groups walking in the parade. The parade starts in the South End (Tremont and Clarendon Sts.) at noon, and ends with a festival at City Hall plaza around 3:00 p.m. Members and friends are cordially invited to walk—all or part way—with our group. This is a joyful event... a way to support human rights while getting some light exercise and having fun with fellow members. Wear your KC t-shirt (optional) and bring along some sunblock and a bottle of water. Please contact us for more info or to sign up.

- *Art Judge and Amy Meyer*

❖ MEMBERSHIP COMMITTEE SEEKS HOSTS

King's Chapel has always loved parties. So, the Membership Committee is looking for a few great hosts - individuals, couples, groups of individuals - who were just waiting for us to ask them to host a King's Chapel social for cocktails, for brunch, for dinner, for dessert, to encourage us to exercise the friendships that we've developed over the years, and make some new ones. Hosts decide what they want to do, when and where they want to do it, and how many participants they are willing to invite, while those who wish to participate indicate their interest and look forward to the invitation. We'll work with both hosts and participants to make the match. Sign up early - for either—to host or to participate. The Social season is on.

- *Anne Sexton, Membership*

❖ SUNDAY SERVICE GREETERS

On March 7, the Membership Committee began the Sunday Morning Greeters program, with the goal of having two greeters each Sunday. Thanks to the generous response of our members, we now have nine greeters and need only two more for the first Sunday of each month. A large thank-you to those have volunteered. To volunteer, please write or call Cliff Allen: clifford_allen12@comcast.net, 978/927-1531.

- *Clifford Allen, Membership Chair*

VESTRY VIEWS

At its April 5 meeting, the Vestry voted to recommend to the members of the Society a reduction of the quorum required by our By-laws for major votes (calling or re-calling a minister, amending the By-Laws, and electing officers) from fifty (50) to 40 (forty). The change is requested so that a quorum can be assured for such votes. Recent concern in being assured of the quorum has led to this requested change.

Fiscal Affairs Chair Chris Barnett and Treasurer Bill Sears presented a balanced Budget for 2011. Vestry voted unanimously to recommend adoption of the budget to the Annual Meeting. The major reductions have been found in deferring maintenance for one year to come, since the Interim year is not a good time to cut programs, and there is cautious optimism that the Annual Appeal may do better than forecast in 2011.

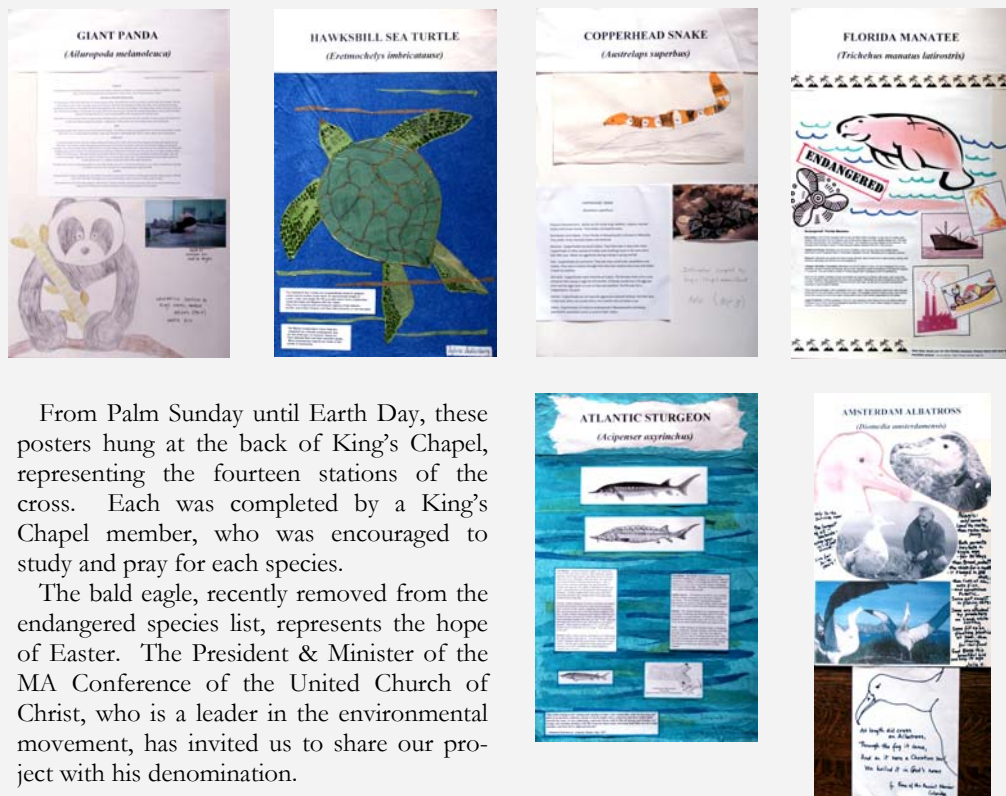
The Nominating Committee asked the Vestry for its help to find nominees for some key posts: Wardens, Vestry, Chair of Parish Council, and some committee chairs. The Chair was optimistic that a slate would be presented at the Annual Meeting of the Society.

Vestry agreed that a vestry of 12 was larger than necessary for a church our size. Vestry will no longer seek to seat 3 classes of 4 members, but will reduce its size by electing classes of 3 members until that decision needs revisiting. This had been suggested by the Interim Senior Minister, and has been communicated to the Nominating Committee. No By-law change is required, nor vote of the Society, since the move is an internal matter to the Wardens and Vestry alone.

A proposal to found a program to instill awareness and support for increasing Bequests to King's Chapel, to be known as the James Freeman Society, was proposed and generally welcomed by the Vestry. There are many details to be worked out in the next months, but it was recommended by Vestry that the new program, although lacking precise definition, be announced to the Annual Meeting.

- *Todd Lee, Junior Warden*

ENDANGERED SPECIES AS STATIONS-OF-THE-CROSS



From Palm Sunday until Earth Day, these posters hung at the back of King's Chapel, representing the fourteen stations of the cross. Each was completed by a King's Chapel member, who was encouraged to study and pray for each species.

The bald eagle, recently removed from the endangered species list, represents the hope of Easter. The President & Minister of the MA Conference of the United Church of Christ, who is a leader in the environmental movement, has invited us to share our project with his denomination.

**COMMENTARY ON
JOHN 15:1-11**

The text tells us that Jesus uses the metaphor of a vine to describe the interconnecting relationship among himself, his disciples, with God. Jesus is the vine, God is the root, and the disciples are the branches. God is the foundation, the source, the anchor. Jesus is the vine, the messenger, the teacher, the communicator who provides both support for and connection between the root (God) and the disciples, who are the branches. The branches produce the fruit. The quality of these interconnecting relationships will determine the overall health, growth, and productivity of the structure, which is the Kingdom of God....

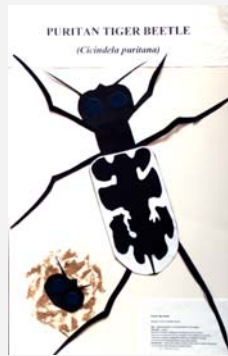
Knowing the dangers and difficulties which the disciples will encounter as they go forth to continue his ministry, and wanting to give them a tangible reminder of his ongoing connection with them, Jesus uses the analogy of a grapevine and its fruit to demonstrate the relationship between himself and his disciples and also the connection through him between his disciples and God. Jesus also makes it very clear that one cannot connect with God except through him. This is one instance when you don't want to eliminate the middleman!

These words spoken by Jesus more than two millennia ago still resonate with us today. How do we understand and make this connection? What do we, as branches of that holy vine, need to do to ensure that the connection among root, branch, and vine is strong, healthy, and productive?

I submit that one way of doing this would be to take a close look at our own connection with Jesus, and also through Jesus to God...How often do we respond to anger with patience, to hurt with compassion, to mistakes with forgiveness, to intolerance with love? How often do we through our words and actions reflect the gift of love which has already been given to us?....

God is still working through [us] to accomplish his work and his will in the world today. We are the branches, the body of Christ, the church. The strength of our connection to the vine will determine just how much we will grow, flourish, and produce. And like a vine, the more we flourish, the more we grow and extend our branches, our reach, and our impact into more and more of the world. Our mission is both to spread and to live God's message of love, compassion, forgiveness, reconciliation, and service.

- Dean Denniston, from a sermon delivered at the Midweek Prayer Service on April 14



✘ PRAYER CIRCLE

This group, which has been ongoing for a long time, prays for people named in our Bede List and those known to our ministers and to one another. Each member prays in different ways, but sincerity of heart and respect are foundational. If you are interested in joining this group, please speak with Lee Glenn or Dianne Arakawa.

✘ PASTORAL CARE CIRCLE

This group, which brings a variety of spiritual gifts and depth of experience, is assisting the Interim Minister with visitation in order to extend the healing ministry of our church. If you feel called to become a part of this group and to be trained, please speak with Dianne Arakawa.

✘ PARISH CONCERNS CIRCLE

This group writes pastoral cards, helps people find rides if they need them, and prepares meals for parishioners when needed. If you are able to help, please call Joanne Giannino.

*From the
Church School Director*

Greetings from the Church School. I am nearing the end of my first year as the Church School Director, and I reflect back on this year proud of the work of the children, families, and teachers. Still, we have month left in our Church School year, and I hope we can maintain our momentum until the end. We'll continue to have lively classes, collect food for the Greater Boston Food Bank (174 pounds and counting!), and join together as a community for special events such as celebrating Mother's Day and Pentecost/Pet Blessing Sunday.

- Shannon Lee

✘ **BCP @2009.CE.AU HAS ARRIVED**

If you would like a copy of the Rev. Dr. John Bunyan's Broad Church Communion Prayerbook and the companion Commentary, they are available at the Parish House. Please contact Brandon Goad at 617/227-2155 ext. 314 or bgoad@kings-chapel.org to purchase your copy.

✘ **CALLING ALL HIGH SCHOOL SENIORS**

We would like to acknowledge our graduating seniors on June 6, Children's Sunday. Please contact Shannon Lee or Joanne Giannino to share your young person's name and information so that we can prepare for them. Thank you.

✘ **PEOPLE NEEDING PEOPLE**

In the love of the truth and in the spirit of Jesus Christ, we unite for the worship of God and the service of man.

In keeping with King's Chapel's covenant, recognizing "the service of man" as an aspect of corporate worship of God, we have created this column to connect people with needs to others possessing the ability to meet those needs. If you are able to assist with any of the requests below, or have a request you would like included in this column, please contact the Parish Administrator, Brandon Goad, at bgoad@kings-chapel.org or 617/227-2155, ext. 314.

Needs:

- Handymen are needed for various tasks requested by parishioners unable to perform home maintenance.
- Cat Needing People: When I move, I cannot take my beautiful, fluffy, older neutered male cat. He has a wonderful disposition. Anyone interested in meeting him for possible adoption should call Ruth Shepard at her cell phone, which is 508-846-1419.

Easter Sunday Photos



*ASSISTANT/ASSOCIATE/AFFILIATE MINISTERS
OF KING'S CHAPEL*

1686	Josiah Clarke, Assistant Minister
1693-1696	George Hatton, Assistant Minister
1699-1706	Christopher Bridge, King's Lecturer*
1709-1729	Henry Harris, King's Lecturer
1731-1736	Thomas Harward, King's Lecturer
1737-1740	Addington Davenport, King's Lecturer
1741-1744	Stephen Roe, Assistant Minister
1747-1755	Charles Brockwell, King's Lecturer
1755-1775	John Troutbeck, King's Lecturer
1809-1815	Samuel Cary, Associate Minister (known also as Colleague Pastor)
1824-1836	Francis William Pitt Greenwood, Associate Minister
1912-1920	Sydney B. Snow, Associate Minister
1924-1925	Laurence Hayward, Assistant in the Week-Day Ministry
1951-1953	George R. Plagenz, Assistant Minister
1976 (2 months)	Craig McClellan, Associate Minister
1980-1998	Charles C. Forman, Affiliate Minister
1980-1982	Yvonne Schaudt, Assistant Minister
1998-2001	Daniel C. Kanter, Assistant Minister
2002-2005	Patricia Brennan, Assistant Minister
2005-2007	Rali M. Weaver, Assistant Minister
2007-present	Joanne Giannino, Assistant Minister

*A King's -- or Queen's -- Lecturer was selected and ordained by the Lord Bishop of London to serve as assistant minister.

N.B. Because contradictions concerning dates and other data have been found, amended lists are forthcoming.

- Cynthia Mutti, Archives

✠ MAY 2010 EVENTS ✠

Sun	Mon	Tue	Wed	Thu	Fri	Sat
						1
2 Family Service 9:45 a.m. Morning Prayer 11:00a.m.	3	4 Midweek Recital 12:15 p.m. Church School Committee 5:30 p.m.	5 Midweek Prayer 12:15 p.m. Evening Bible Study 6:00 p.m.	6	7 JUNE NEWSLETTER SUBMISSIONS DUE	8
9 <i>Mother's Day</i> Family Service & Church School 9:45a.m. Morning Prayer 11:00a.m.	10 Vestry Meeting 5:45 p.m.	11 Midweek Recital 12:15 p.m.	12 Midweek Prayer 12:15 p.m. Vestry By-Laws Working Group 5:30 p.m.	13	14	15
16 Morning Prayer 11:00a.m.	17	18 Midweek Recital 12:15 p.m. Parish Council 6:00 p.m.	19 Midweek Prayer 12:15 p.m.	20	21	22
23 Family Service & Church School 9:45 a.m. Morning Prayer 11:00a.m.	24	25 Midweek Recital 12:15 p.m.	26 Midweek Prayer 12:15 p.m. Social Action Committee 6:00 p.m.	27	28	29
30 Morning Prayer 11:00a.m.						

King's Chapel House
64 Beacon Street
Boston, MA 02108

PERIODICAL
Postage
PAID
Boston, MA
USPS 011-271

RETURN SERVICE REQUESTED

The Rev. Dianne E. Arakawa, Interim Senior Minister
The Rev. Joanne Giannino, Assistant Minister
The Rev. Carl R. Scovel, Minister Emeritus
Heinrich Christensen, Director of Music
Pei-Chun Lin, Children's Music Director
Shannon Lee, Church School Director
Brandon Goad, Parish Administrator

**POSTMASTER:
THIS CONTAINS TIME-SENSITIVE MATERIAL;
PLEASE DELIVER PROMPTLY.**

**...Coming soon...
Parish Socials
You are going to want to participate.
Stay Tuned...**